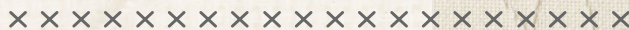
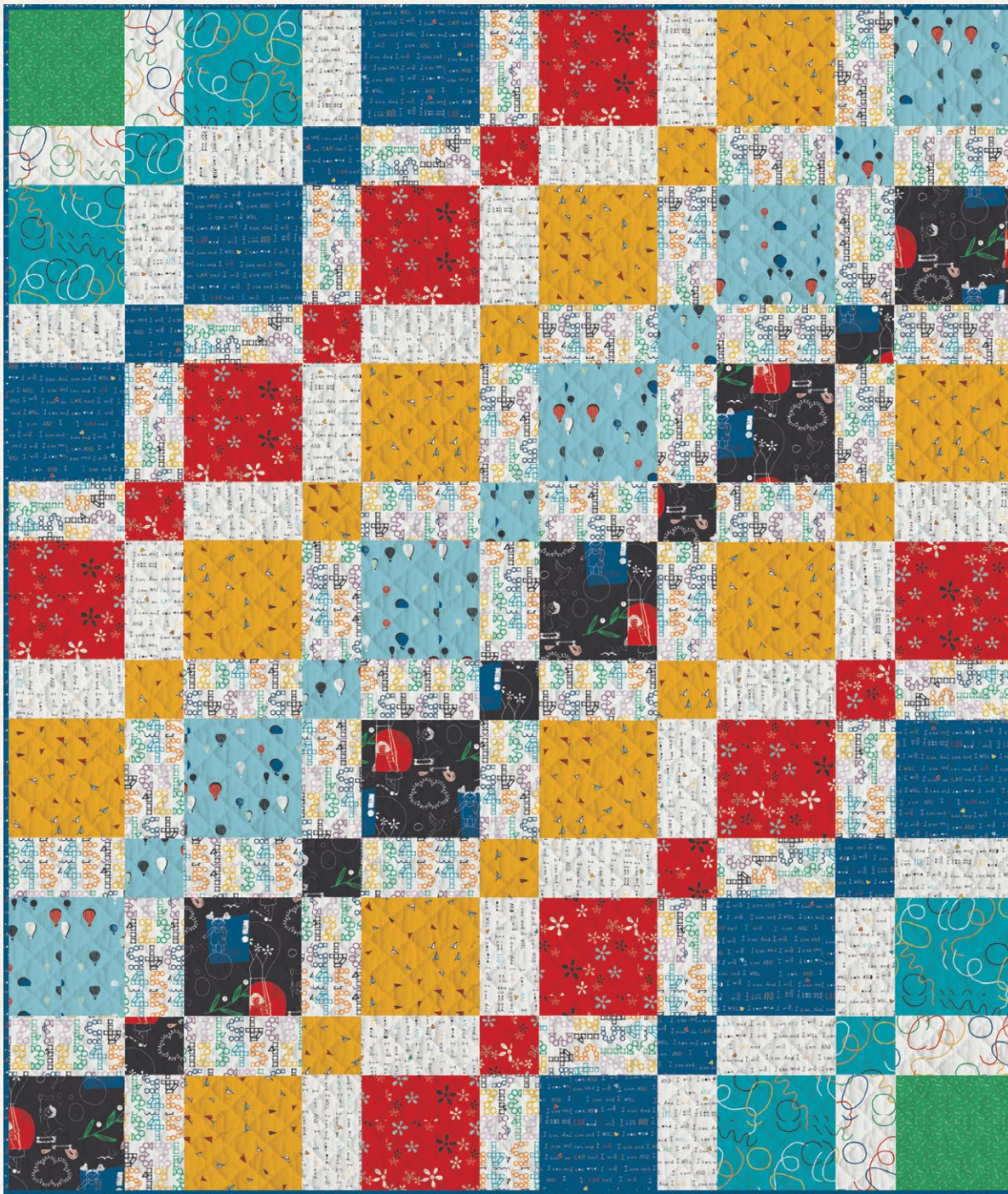




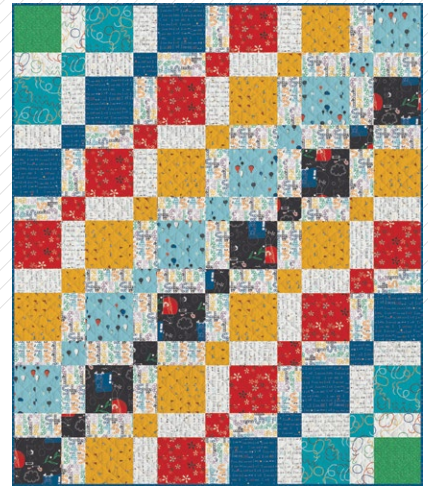
UP & AWAY



UP & AWAY

QUILT DESIGNED BY AGF STUDIO

AGFstudio



COLOR OPTION

SISU!

FABRICS DESIGNED BY AGF STUDIO

COURAGE ELEMENTAL



SSU-10050
SCHOOL OF SISU ESSENCE



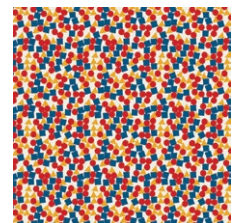
SSU-10051
THINGAMAJIGS GIGGLING



SSU-10052
HEI SKY CLOUDINE



SSU-10053
WILLFUL BUDS CARDINAL



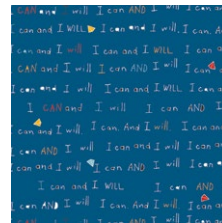
SSU-10054
BUILDING BLOCKS RUBIK



SSU-10055
PAPER PLANE HOPES



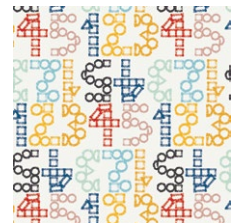
SSU-10056
WHATCHAMACALLITS
OVERFLYING



SSU-10057
THE MOTTO HIGHLIGHTED



SSU-10058
SPACE BUBBLES FIZZ

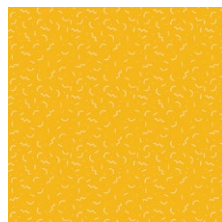


SSU-10059
COUNTDOWN AND GO!

COURAGE RADIANT



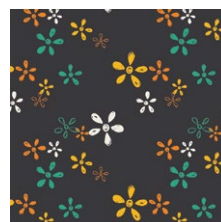
SSU-20050
SCHOOL OF SISU SPIRIT



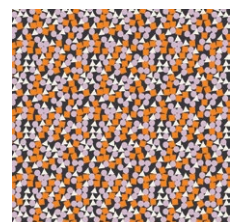
SSU-20051
THINGAMAJIGS LAUGHING



SSU-20052
HEI SKY LAVENDERINE



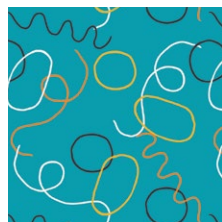
SSU-20053
WILLFUL BUDS CHALKBOARD



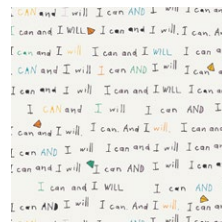
SSU-20054
BUILDING BLOCKS
BROUHAHA



SSU-20055
PAPER PLANE DREAMS



SSU-20056
WHATCHAMACALLITS
UNDERWATER



SSU-20057
THE MOTTO DEFINED



SSU-20058
SPACE BUBBLES ZEST



SSU-20059
COUNTDOWN AND POW!



UP & AWAY

FINISHED SIZE | 68" x 80"

FABRIC REQUIREMENTS

Fabric A	SSU-10051	¼ yd.
Fabric B	SSU-20056	⅓ yd.
Fabric C	SSU-10057	⅞ yd.
Fabric D	SSU-10053	⅔ yd.
Fabric E	SSU-10055	⅞ yd.
Fabric F	SSU-10058	½ yd.
Fabric G	SSU-10050	½ yd.
Fabric H	SSU-10056	⅙ yd.
Fabric I	SSU-20057	⅞ yd.
Fabric J	SSU-20059	1½ yds.

BACKING FABRIC

SSU-20059 5yds. *(suggested)*

BINDING FABRIC

SSU-10057 (Fabric C) *(included)*

CUTTING DIRECTIONS

¼" seam allowances are included.
WOF means width of fabric.

- Two (2) 8½" x 8½" square from Fabric **A**
- Four (4) 8½" x 8½" square from Fabric **B**
- Six (6) 8½" x 8½" square from Fabrics **C, F, G**
- Eight (8) 8½" x 8½" square from Fabric **D**
- Ten (10) 8½" x 8½" square from Fabric **E**
- Two (2) 4½" x 4½" square from Fabric **B**
- Four (4) 4½" x 4½" square from Fabric **C**
- Six (6) 4½" x 4½" square from Fabric **D**
- Eight (8) 4½" x 4½" square from Fabric **E**
- Five (5) 4½" x 4½" square from Fabrics **F, G**

- Four (4) 4½" x 8½" rectangle from Fabric **H**
- Twenty Four (24) 4½" x 8½" rectangle from Fabric **I**
- Forty three (43) 4½" x 8½" rectangle from Fabric **J**

CONSTRUCTION

Sew all rights sides together with ¼" seam allowance.

- Follow the Diagram below for fabric placement.
- Assemble Rows **1-3-5-7-9-11-13** with 8½" x 8½" squares and 8½" x 4½" rectangles alternating their order.
- Assemble rows **2-4-6-8-10-12** with 4½" x 4½" squares and 8½" x 4½" rectangles alternating their order.

